

job name:
 type:

i.drop™ spec sheet 90CRI

material
driver housing
 spun .063" aluminum trumpet. available in a variety of finishes listed below.

optics
diffuser
 .125" gloss white virgin acrylic. reinforced top opening on 24" and 30".

LED
body illumination
 flexible planar LED lighting sheet in 3000K, 3500K, or 4000K (90+ cri), utilizing emitters rated at >77,000hrs L70 per TM21-11 from LM80 data.

downlight
 COB in 3000K, 3500K, or 4000K (90+ cri standard), with rated life of >36,000hrs L70(9K) per IES TM21-11, and >70,000hrs projected life.

driver
 class 2 power unit, universal input (120-277 vac), 10% minimum dimming level, PF >92, THD <20% at full load, >418khrs MTBF, protections include short circuit, over current, over voltage and over temperature. wired from factory for 0-10v dimming.

mounting
 designed to mount to 4 inch octagon junction box (by other). single stainless steel cable and field adjustable gripper. white power cord standard with other colors listed below under options. consult factory for installation instructions.

emergency
 emergency not available. if required, recommend use of inverter (by other).

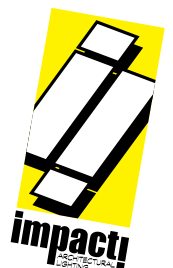


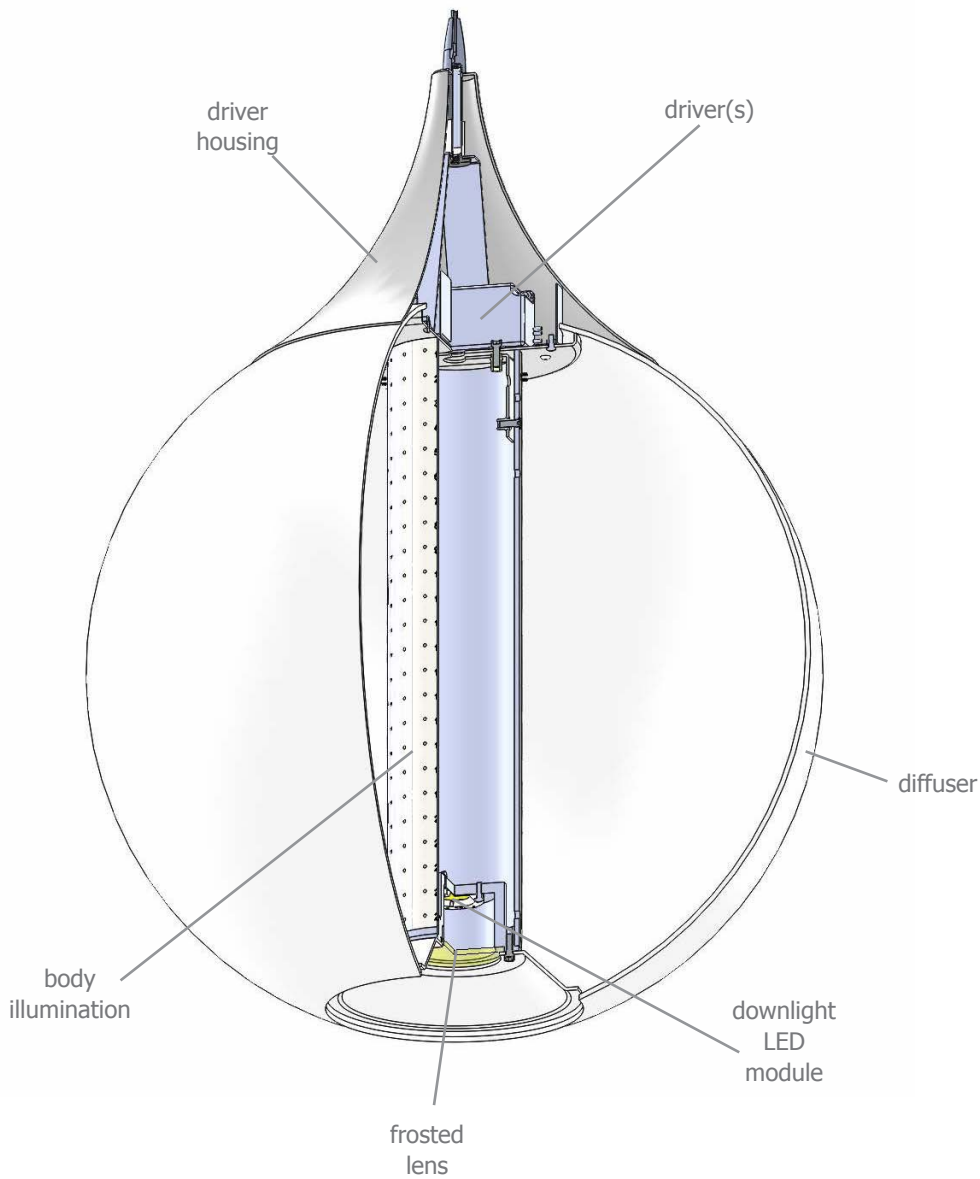
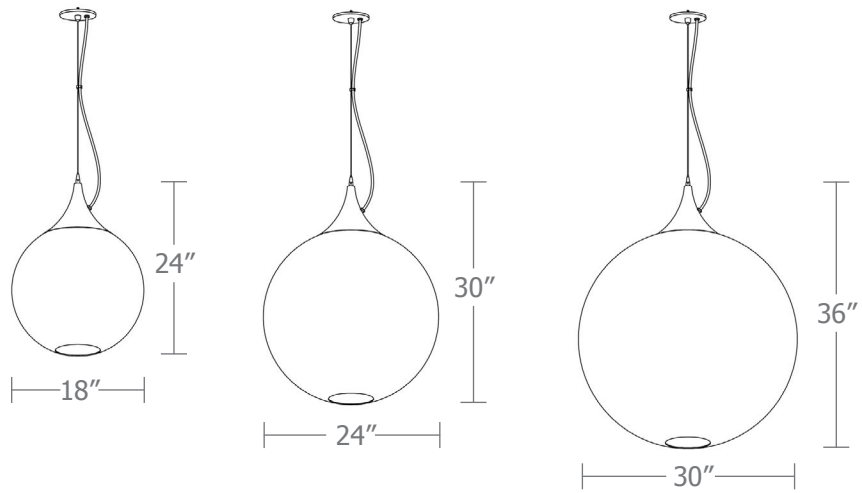
catalog number

--	--	--	--	--	--	--

	size	body illumination		downlight		painted finish	power cord	options
		CCT	lumens	CCT	lumens			
P5318	18"dia X 24"ht	30 3000K	LO 1305 lm	30 3000K	NDL no downlight	AP anodized paint	BKPC Black power cord and canopy	6FT 72" cables 12FT 12ft adj suspension
		35 3500K	HI 2080 lm	35 3500K	LO 1300 lm	BS brass		
		40 4000K		40 4000K		BU blue		
P5324	24"dia X 30"ht	30 3000K	LO 2080 lm	30 3000K	NDL no downlight	BZ bronze	SBPC Silver braid power cord and white canopy	ELD EldoLED* LUT Lutron* <small>*consult factory</small>
		35 3500K	HI 2675 lm	35 3500K	LO 1300 lm	CP champagne		
		40 4000K		40 4000K		FB flat black		
P5330	30"dia X 36"ht	30 3000K	LO 2080 lm	30 3000K	NDL no downlight	GM gun metal	WHPC White power cord and canopy	
		35 3500K	HI 3265 lm	35 3500K	LO 1300 lm	MB military blue		
		40 4000K		40 4000K		MW matte white		

premium finish
 RAL specify RAL#

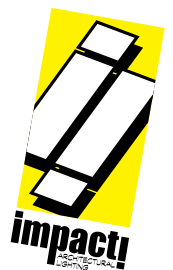




downlight



no downlight




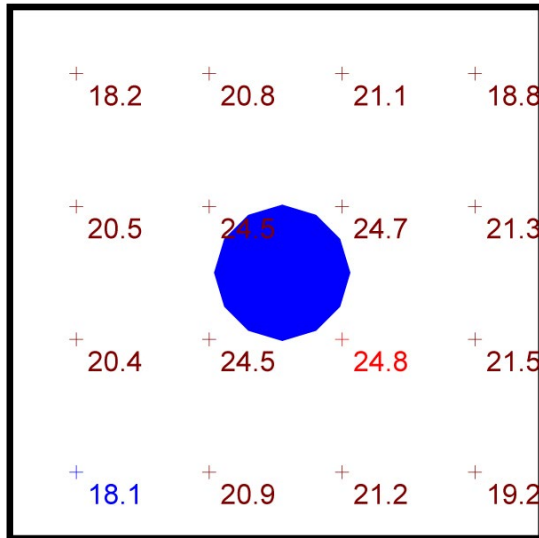
Typical Lighting Layout

Statistics

Description	Symbol	Avg	Max	Min	Max/Min	Avg/Min
i.drop	+	21.3 fc	24.8 fc	18.1 fc	1.4:1	1.2:1

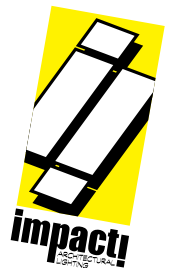
Schedule

Symbol	QTY	Manufacturer	Catalog Number	Description	Lamp	Wattage
	1	Impact Architectural Lighting	P5330 40 HI 40 LO	30" dia. pendant i.drop w/ integral downlight	4000k 90cri LED	50



Plan View
Scale - 1" = 2ft

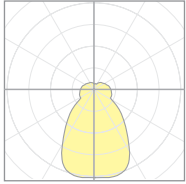
- 10' x 10' x 13'H space
- 80/50/20 reflectances
- bottom of fixture at 8' aff
- FC readings at 2.5' aff
- layout conducted using P5330 with 90 CRI H3 (3265 lm) with LO lumen 90 CRI (1500 lm) integral downlight for total package providing 4765 delivered lumens



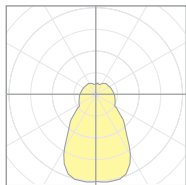
Quick Calc Table

Tests indicated below are a combination of direct and indirect. LLF are as close as possible.

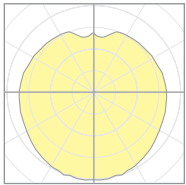
for more detailed calculations see table on next page.



19631
P5318-40HI



19619
P5324-40LHI-40DL



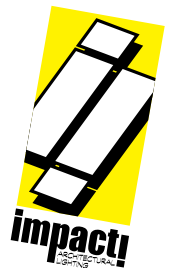
19620
P5324-40HI

Cat No	Delivered* Lumens	Watts 120V / 277V	IES File #	LLF to be applied
P5318 LO	1305	11	19620 globe only	.47
	2605	29	19631 with DL	.83
P5318 HI	2080	18	19620 globe only	.74
	3380	36	19631 with DL	1.08
P5324 LO	2080	18	19620 globe only	.74
	3380	36	19619 with DL	.83
P5324 HI	2675	23	19620 globe only	.96
	3975	41	19619 with DL	.97
P5330 LO	2080	18	19620 globe only	.74
	3380	36	19619 with DL	.83
P5330 HI	3265	28	19620 globe only	1.17
	4565	46	19619 with DL	1.12

*delivered lumens based on 4000K, 90+ cri

The application of a Light Loss Factor is required to:

- match the lumen output for the power module specified
- incorporate the increased lumen output due to LED/Driver upgrades



Advanced Calculation Table

Tests are for each element separately and must be "stacked" to represent single fixture
 Consult factory for applications assistance

Globe

Cat No	Delivered* Lumens	Watts 120V/277V	IES File #	LLF to be applied
P5318	LO 1305	11	19620	.47
P5318	HI 2080	18	19620	.74

P5324	LO 2080	18	19620	.74
P5324	HI 2675	23	19620	.96

P5330	LO 2080	18	19620	.74
P5330	HI 3265	28	19620	1.17

*delivered lumens based on 4000K, 90+ cri

Downlight

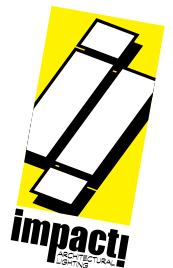
Delivered* Lumens	Watts 120V/277V	IES File #	LLF to be applied
LO 1300	18	20697	.84

LO 1300	18	20697	.84

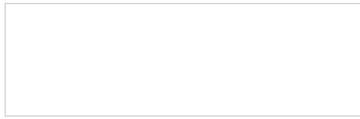
LO 1300	18	20697	.84

The application of a Light Loss Factor is required to:

- match the lumen output for the power module specified
- incorporate the increased lumen output due to LED/Driver upgrades



Powder Coat Paint Finishes



MW matte white



AP anodized paint



SS satin silver



TG textured gray



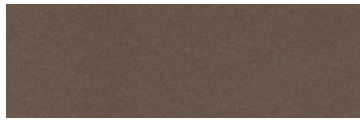
FB flat black



SB satin black



CP champagne



BZ bronze



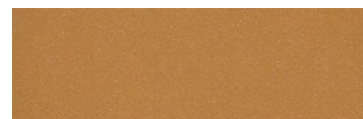
GM gun metal



OR orange 2011



BU blue 5017



BS brass



RD red 3020



YO yellow 1018



MB military blue

For accurate color verification, actual finish samples are available upon request.

Premium Finishes*



RAL#

*Available on select series. Consult product submittal for availability.

